

**\$0.58 SF/\$0.95 SF**

**Shell/Office Surcharge**

- Spaces from 3,154 SF to 24,180 SF with office.
- Many restaurants & services nearby
- Superior access and exposure to Airport Way
- Easy access to PDX and I-205
- NNNs \$0.26/SF
- 5% lease commission to brokers
- NO deferred maintenance
- On site security 365 nights per year
- Monument space available
- Ample parking
- Traffic Count: 40,000 vehicles per day
- High visibility LED lighting in all exterior areas

**Industrial Space  
FOR LEASE**

## Columbia Pacific Airport Way

12801-13115 NE Airport Way, Portland, OR

**Take a virtual tour now: Text "AW" to 24587**



Address	Bdg	Date Available	Total SF	Office SF	Docks	Grades	Base Rent \$/SF		Comment
							Shell	Office	
12801 NE Airport Way	6	Now	8,678	2,970	2	1	\$0.58	\$0.95	End cap- superior access/exposure to Airport Way; 3/1,000 Parking
12826 NE Airport Way	4	Now	7,960	1,500	4	1	\$0.58	\$0.95	End cap- superior access/exposure to Airport Way; Exclusive dock bay
12839 NE Airport Way	9	4/1/21	3,154	720	1*	1	\$0.58	\$0.95	*Shared dock
12905 NE Airport Way	10	3/1/21	6,912	3,000	2*	2	\$0.58	\$0.95	*Shared docks and trash area
13107-13115 NE Airport Way	13	See Comment	24,180*	4,685*	9*	7*	\$0.58	\$0.95	Four spaces in current configuration; spaces can be reconfigured to suit new tenant. 13107-13111 available 12/01/20, 13115 available 5/01/20
12831 NE Airport Way	8	5/1/2021	5,512	800	2	1	\$0.58	\$0.95	



**For more information, contact:**  
**Quest Property Management**  
**Office: 503-222-5402**

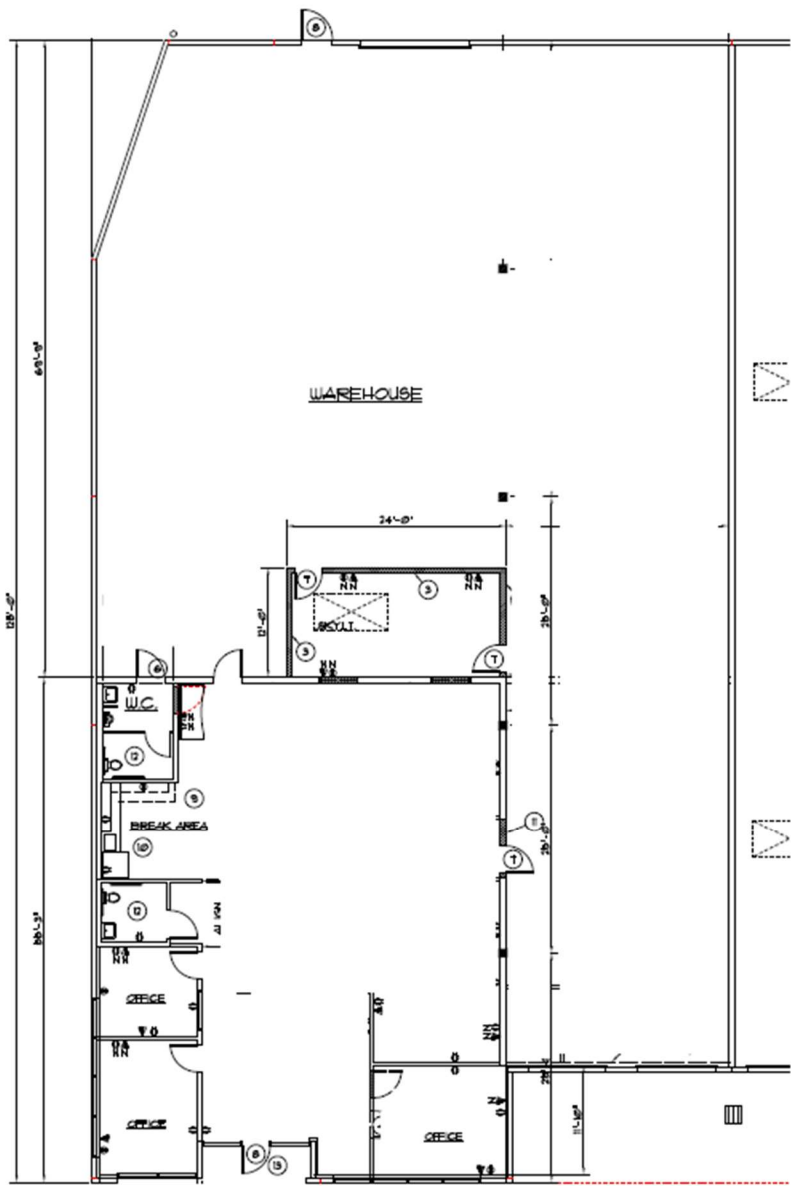
**Kevin Johnson 503-816-5402**  
**Kevin@questpropertymanagement.com**

**Rachel Phelps 503-349-2799**  
**Rachel@questpropertymanagement.com**

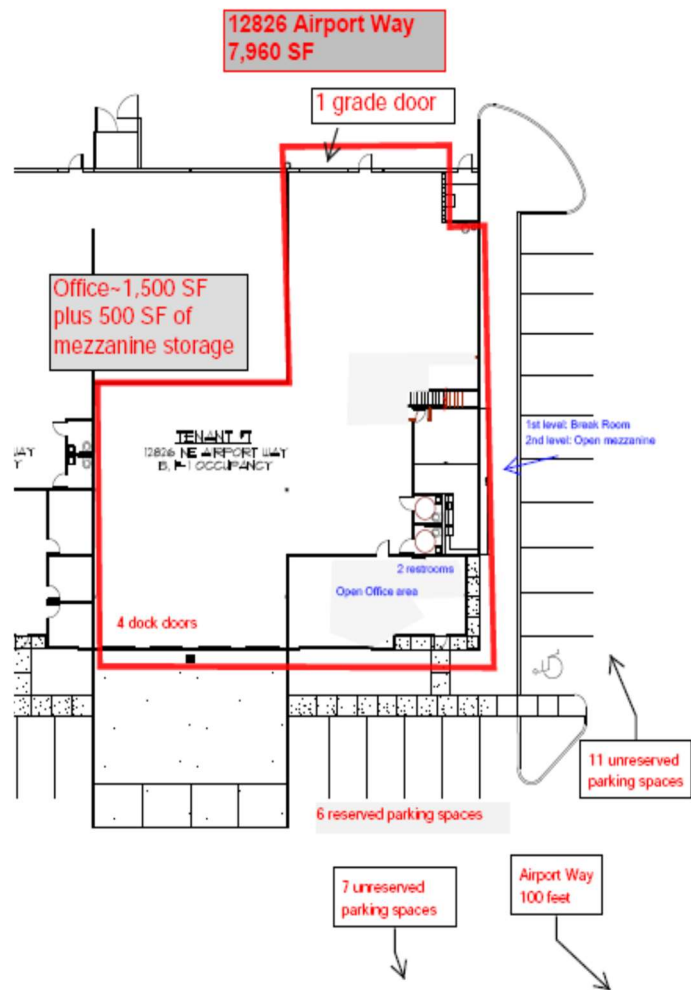


Contact us to schedule a  
Tour!

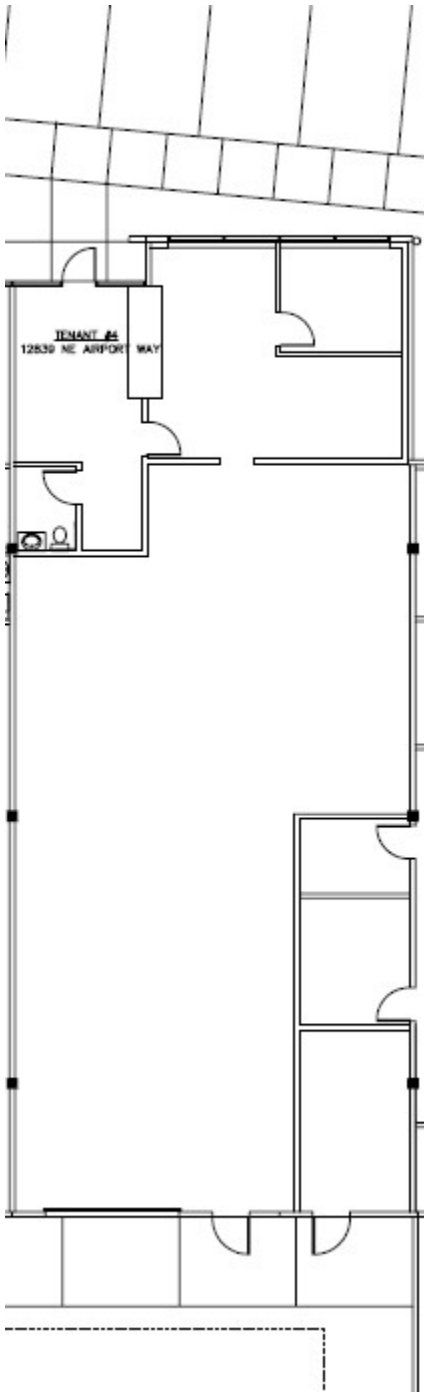
12801 Building 6 – 8,678 SF



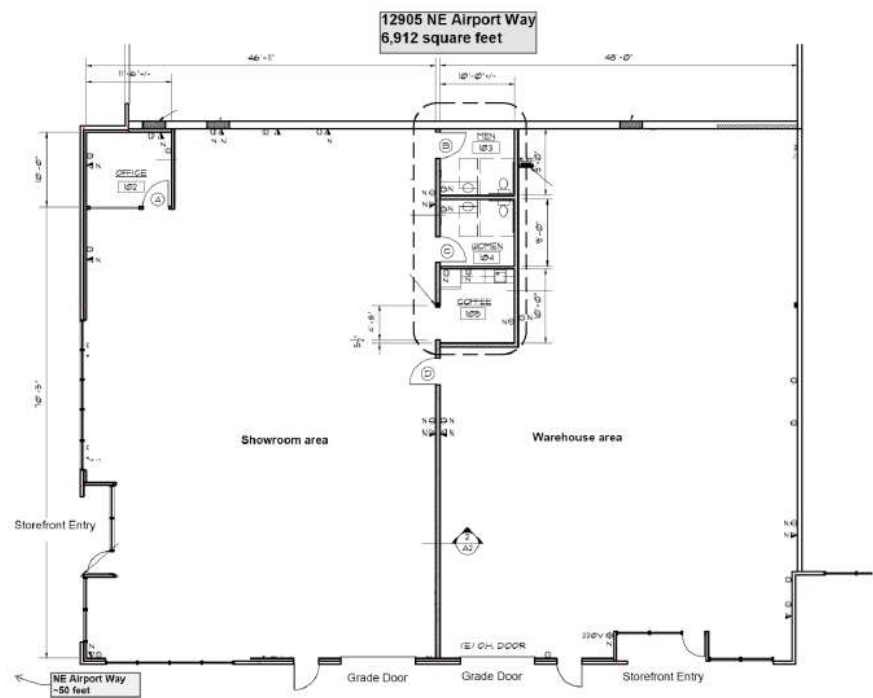
12826 Building 4  
7,960 SF



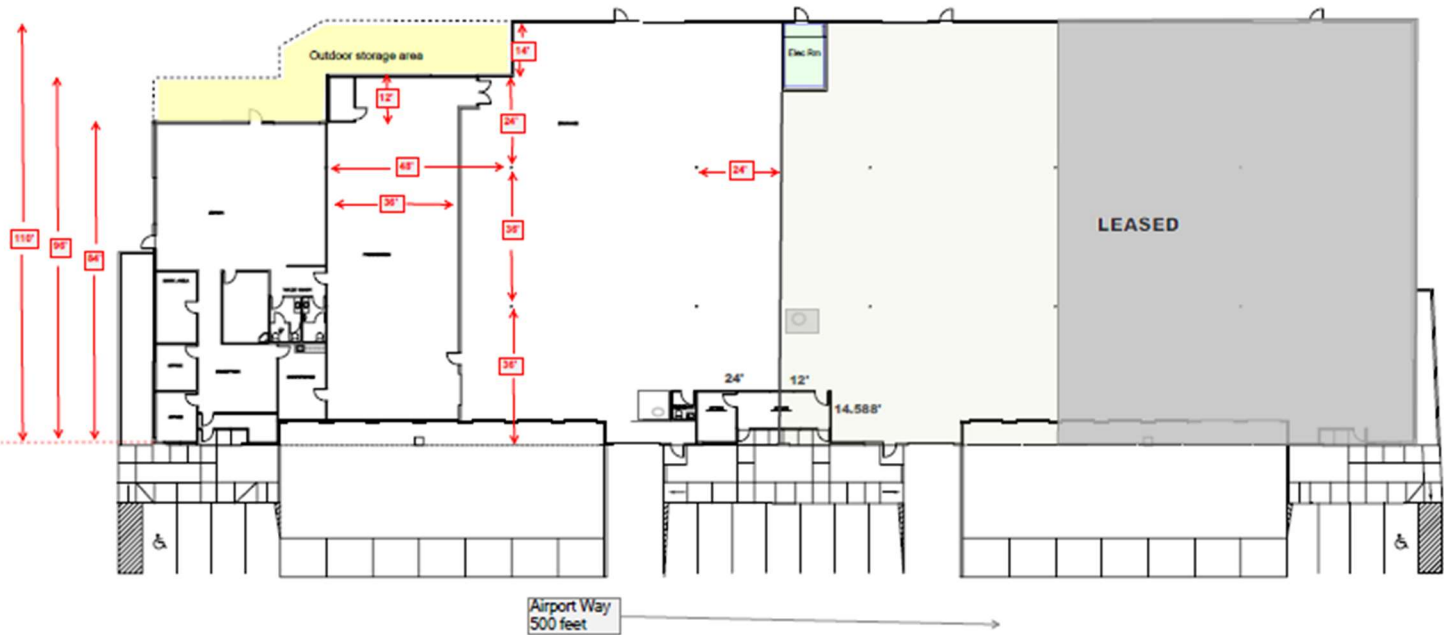
12839 Building 9  
3,154 SF



12905 Building 10  
6,912 SF



13107-13115 Building 13  
24,180 SF



12831 Building 8  
5,512 SF

