

\$0.58 SF/\$0.95 SF

Shell/Office Surcharge

- Spaces from 7,960 SF to 17,167 SF with office.
- Many restaurants & services nearby
- Superior access and exposure to Airport Way
- Easy access to PDX and I-205
- NNNs \$0.26/SF
- 5% lease commission to brokers
- NO deferred maintenance
- On site security 365 nights per year
- Monument space available
- Ample parking
- Traffic Count: 40,000 vehicles per day

**Industrial Space
FOR LEASE**

Columbia Pacific Airport Way

12801-31151 NE Airport Way, Portland, OR

Take a virtual tour now: Text "AW" to 24587



Ref.	Address	Bdg	Date		Total SF	Office SF	Docks	Grades	Base Rent \$/SF		Comment
			Available						Shell	Office	
1	12801 NE Airport Way	6	11/1/20		8,678	2,970	2	1	\$0.58	\$0.95	End cap- superior access/exposure to Airport Way; 3/1,000 Parking
2	12826 NE Airport Way	4	11/1/20		7,960	1,500	4	1	\$0.58	\$0.95	End cap- superior access/exposure to Airport Way; Exclusive dock bay
3	12817 NE Airport Way	7	11/1/20		15,025	2,838	3	2	\$0.58	\$0.95	End cap with outdoor storage allowed Excellent truck staging
4	13120 NE Airport Way	1	2/1/21		13,084	480	4	0	\$0.58	\$0.95	Efficient space with minimal office buildout.
5	12844 NE Airport Way	3	2/1/21		17,167	544	6	1	\$0.58	\$0.95	Warehouse/distribution space ideal for logistics



For more information, contact:
Quest Property Management
Office: 503-222-5402

Kevin Johnson 503-816-5402
Kevin@questpropertymanagement.com

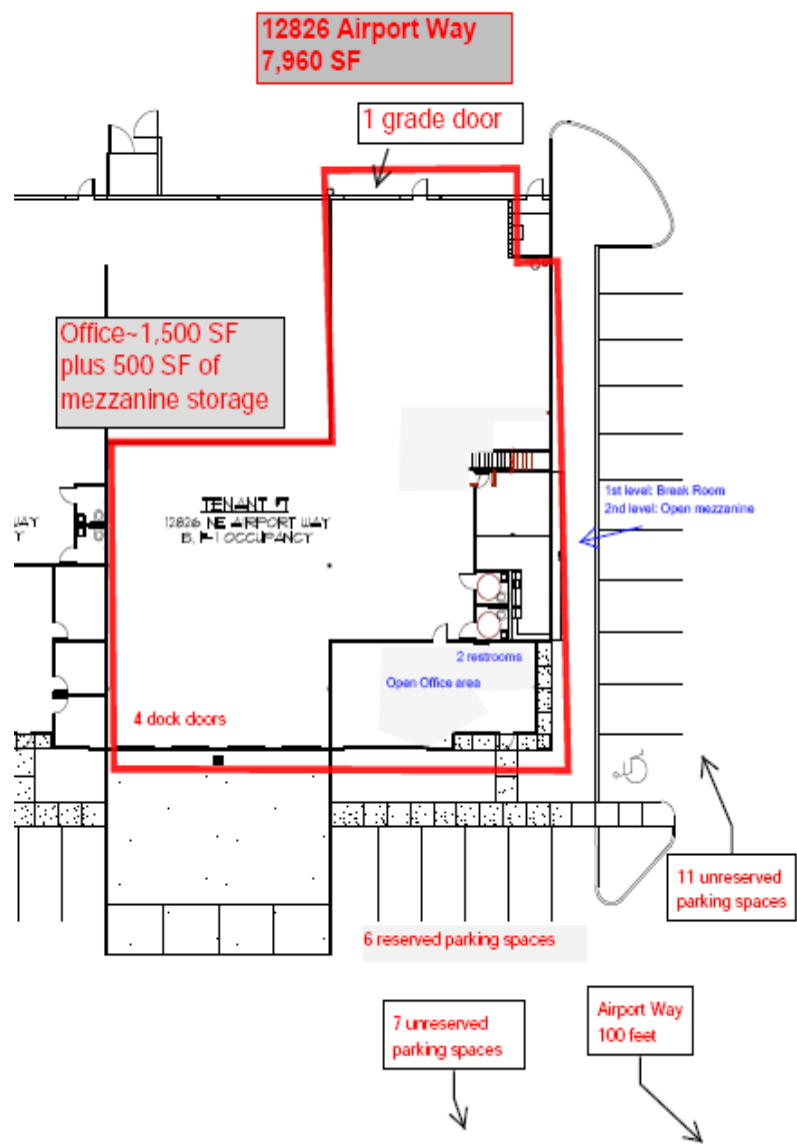
Rachel Phelps 503-349-2799
Rachel@questpropertymanagement.com



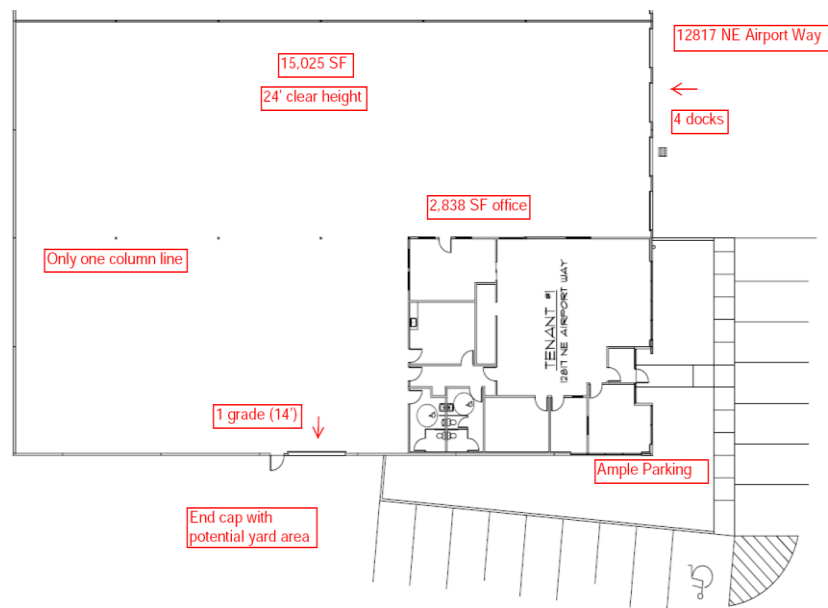
**Contact us to schedule a
Tour!**

[illegible]

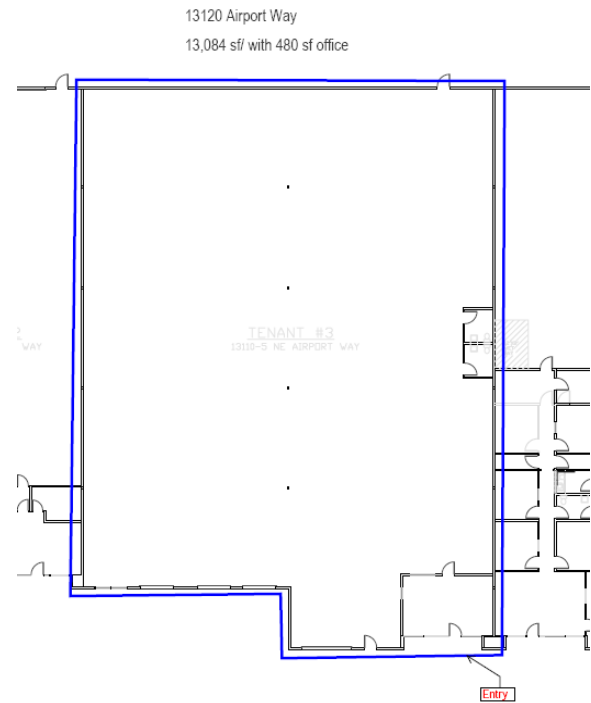
12826 Building 4



12817 Building 7



13120 Building 1



12844 Building 3

