

\$0.58 SF/\$0.95 SF

Shell/Office Surcharge

- Spaces from 7,609 SF to 46,876 SF with office.
- Many restaurants & services nearby
- Superior access and exposure to Airport Way
- Easy access to PDX and I-205
- NNNs \$0.26/SF
- 5% lease commission to brokers
- NO deferred maintenance
- On site security 365 nights per year
- Monument space available
- Ample parking
- Traffic Count: 40,000 vehicles per day

**Industrial Space
FOR LEASE**

Columbia Pacific Airport Way

12801-31151 NE Airport Way, Portland, OR

Take a virtual tour now: Text "AW" to 24587



Ref.	Address	Bdg	Date Available	Total SF	Office SF	Docks	Grades	Base Rent \$/SF		Comment
								Shell	Office	
1	12801 NE Airport Way	6	11/1/20	8,768	2,970	2	1	\$0.58	\$0.95	End cap- superior access/exposure to Airport Way; 3/1,000 Parking
2	12826 NE Airport Way	4	11/1/20	7,609	1,500	4	1	\$0.58	\$0.95	End cap- superior access/exposure to Airport Way; Exclusive dock bay
3	12817 NE Airport Way	7	11/1/20	15,025	2,838	3	2	\$0.58	\$0.95	End cap with outdoor storage allowed Excellent truck staging
4	13120 NE Airport Way	3	2/1/21	13,084	480	3	1	\$0.58	\$0.95	Efficient space with minimal office buildout.
5	12848 NE Airport Way	3	11/1/20	29,709	3,000	8	2	\$0.58	\$0.95	* End cap space with oversized grade doors
6	12844 NE Airport Way	3	2/1/21	17,167	544	6	1	\$0.58	\$0.95	* Warehouse/distribution space ideal for logistics.
*contiguous to 46,876 SF.										



For more information, contact:
Quest Property Management
Office: 503-222-5402

Kevin Johnson 503-816-5402
Kevin@questpropertymanagement.com

Rachel Phelps 503-349-2799
Rachel@questpropertymanagement.com



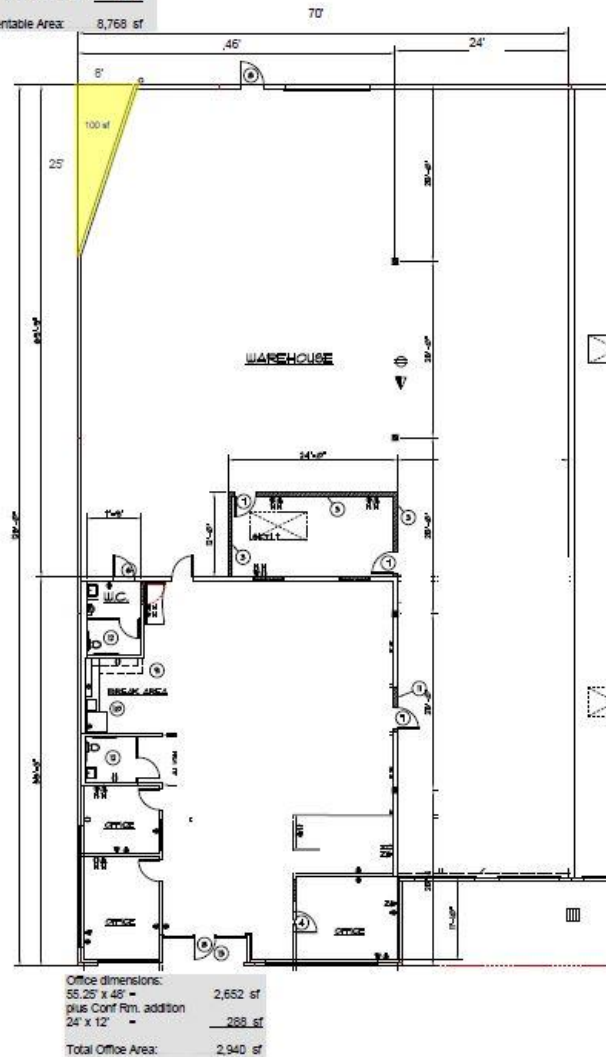
**Contact us to schedule a
Tour!**

12801 Building 6

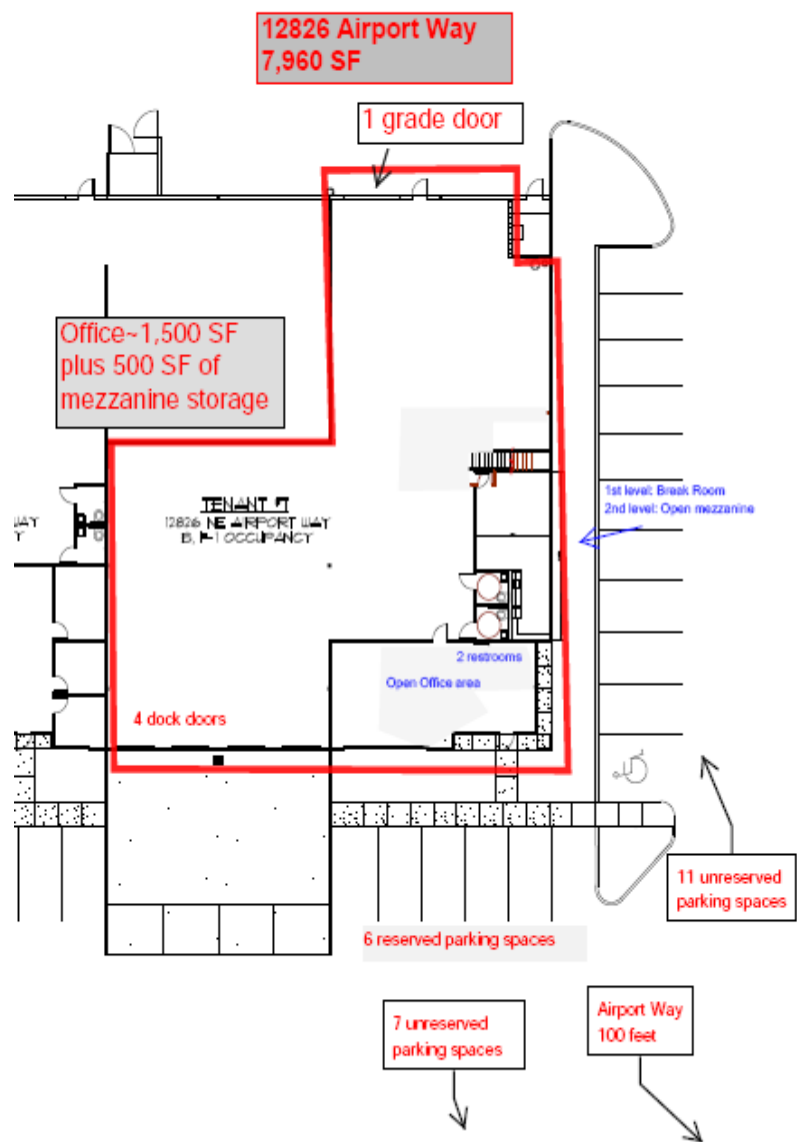
12801 NE Airport Way

8,678 SF with 2,940 SF of office

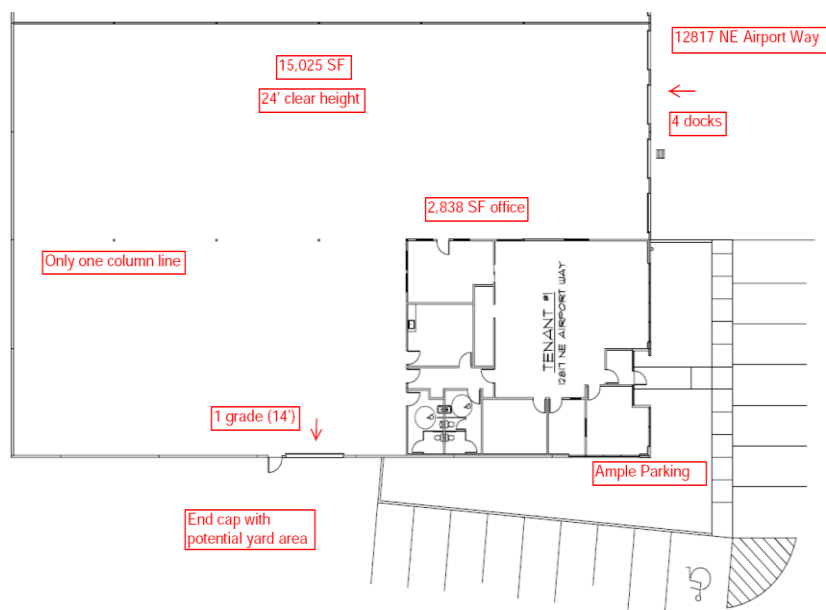
Space dimensions:
70' x 125' = 8,750 sf
less "yellow triangle" (100) sf
plus share of Elec. Rm. 28 sf
Total Rentable Area: 8,768 sf



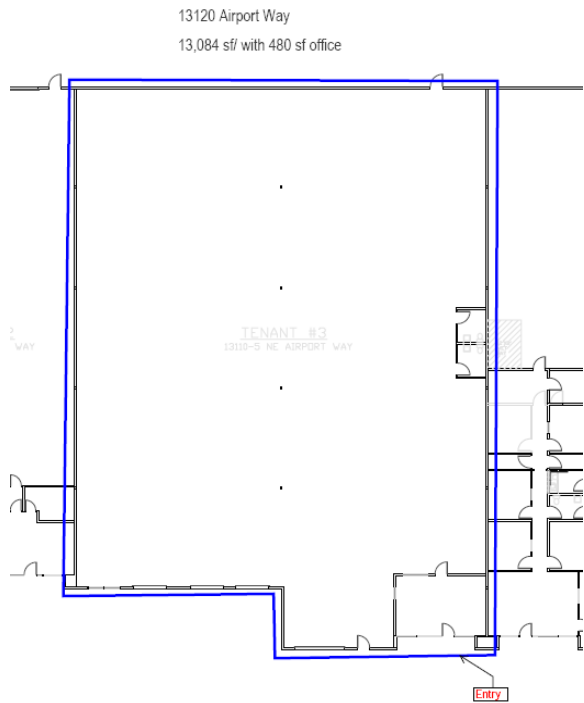
12826 Building 4



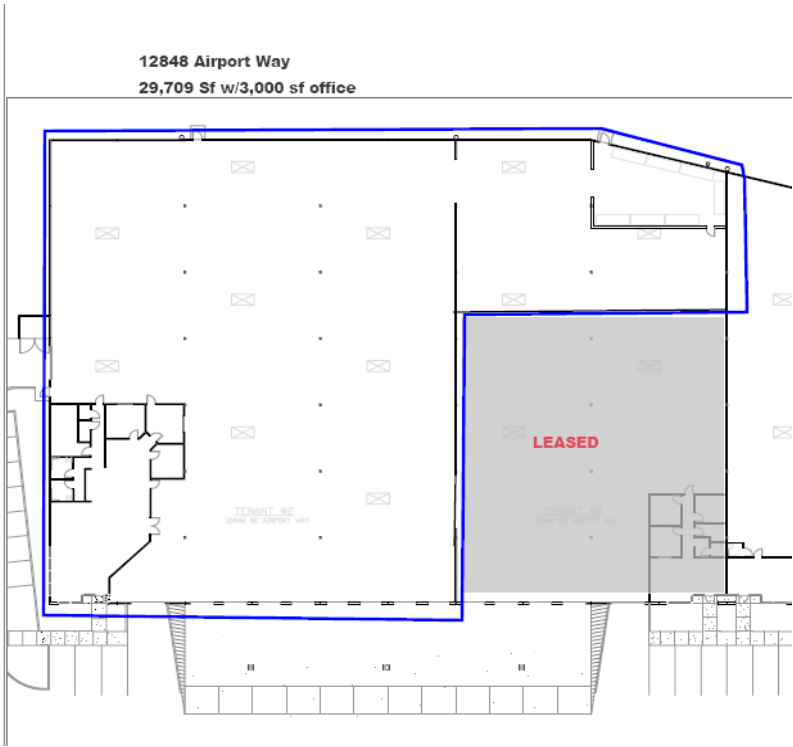
12817 Building 7



13120 Building 3



12848 Building 3



12844 Building 3

